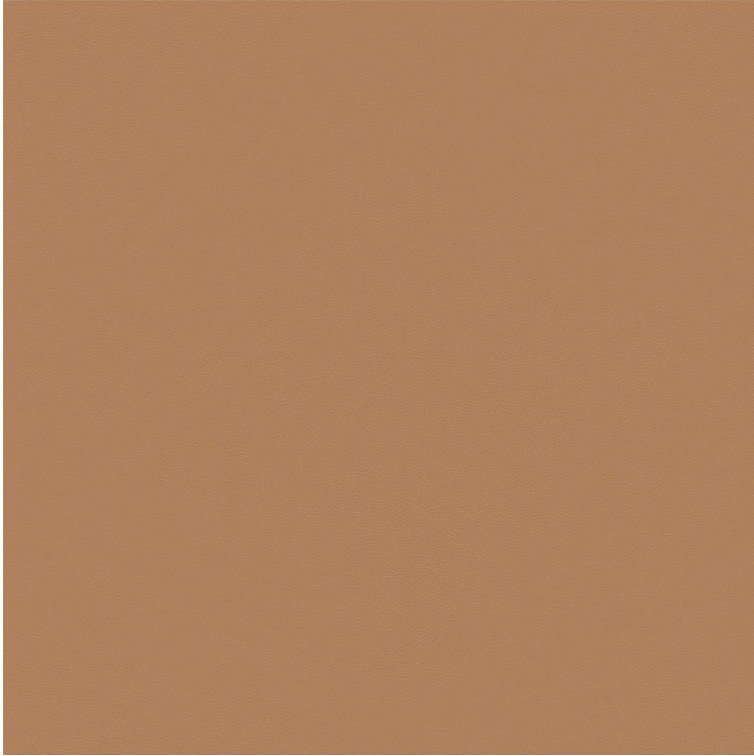


# Sørensen



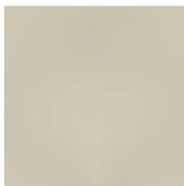
# Ultra

# Leather

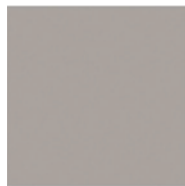
Composition: 100% Protected leather  
Size/Thickness: 3.5-4.5m<sup>2</sup> / 1.3-1.5mm  
Tearing Strength: 20N  
Pilling: 3 (ISO 1-5)  
Lightfastness: 3-4 out of 5  
Fire Test: Please see website for details  
Finish Adhesion: 2N/10mm  
Flexing Endurance: 50,000 cycles



White 41594



Egg Shell 41581



Oat 41568



Altweiss 41576



Earth 41584



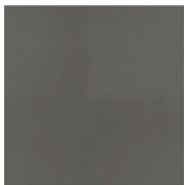
Leaf 41566



Marsh 41570



Smoke 41567



Lava 41575



Grey 41585



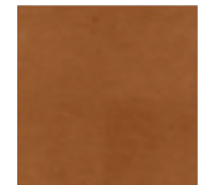
Moss 41569



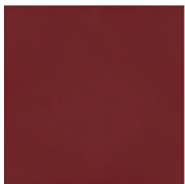
Safari 41586



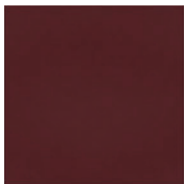
Camel 41571



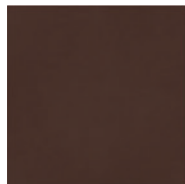
Brandy 41574



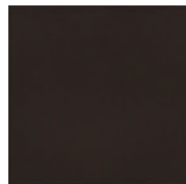
Poppy 41578



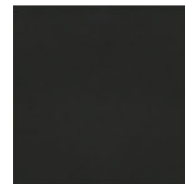
Brick 41579



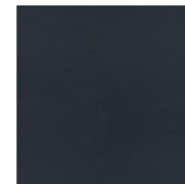
Cognac 41598



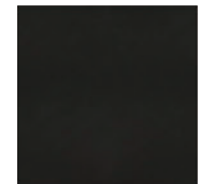
Chocolate 41589



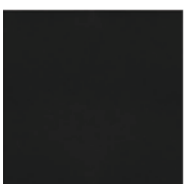
Anthrazite 41580



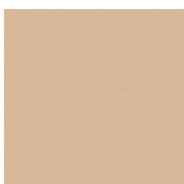
Navy 41573



Black Brown 41590



Black 41599



Honey 41572